



++  
++  
++  
++

# Annual Report

2023



++  
++  
++  
++

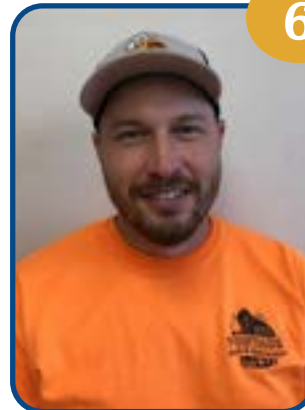
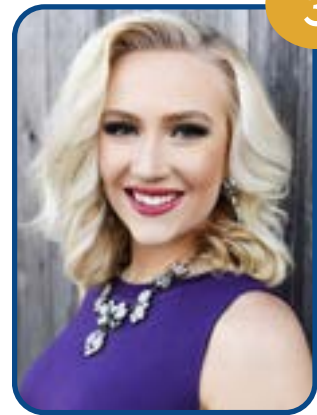
**Portage Parks &  
Recreation  
Department**

# Table Of

# Contents

1	Meet Our Team	++
2	Vision & Mission	++
3	Parks	++
8	Recreation	++
14	Forestry	
16	Administration	
17	Sponsorship	
18	Budget	

# Our Team



01. Toby Monogue - Department Manager

02. Mike Percy - Recreation Coordinator

03. Hayley Wolfe - Recreation Assistant

04. Emmett McCarthy - Arborist/Crew Person

05. Mark Fahey - Crew Person

06. Justin Brown - Crew Person

# Vision & Mission

## Vision

The Portage Park and Recreation Department's Vision is to enrich the community by providing affordable, diverse recreational opportunities to encourage physical fitness and mental health while building community bonds and enhancing the quality of life by providing safe, welcoming parks and recreational facilities. Community through people, parks, and programs.

## Mission

The Portage Park and Recreation department aims to provide and maintain a beautiful and accessible park system, quality and affordable recreation programs, and restore and maintain city forestry. We strive to serve the community and provide options that will benefit the lives of those in the Portage Community.



# Parks

## Improvement Projects



### **Pine Meadow**

- ADA path added
- New Pickleball Courts



### **Collipp-Worden**

- ADA path added to shelter 2
- Replaced Playground
- Crack filled and seal coated Tennis courts



# Parks

## Improvement Projects



### Levee Path

- Crack filled and seal coated

### Lincoln Park

- Basketball court crack filled and seal coated



### AED Donations

- Monetary donations were received from the Portage Rotary, Masonic Lodge, and the Portage Area Community Fund to purchase 3 new AEDs.
- New AEDs are located at the Lawton Soccer Complex, Little League Complex, and Silver Lake Beach.



# Parks

## Shelter Rentals

Location	# of Rentals
Collipp- Worden #1	46
Pauquette #1	30
Sunset	27
Collipp-Worden #2	16
Pauquette #2	19
Silver Lake	17
Beasley Pavillion	12
Goodyear	10
Riverside	2
Pine Meadow	3
Woodridge	0
Sanborn	0
Pauquette Gazebo	7



Resident Rentals:  
147

Non-Resident Rentals:  
42



### Tier 1 Shelters

M-F \$45 R/\$70 NR

Sat/Sun \$55 R/\$80 NR

### Tier 2 Shelters

M-F \$35 R/\$60 NR

Sat/Sun \$45 R/ \$70 NR

### Tier 3 Shelters

M-F \$25 R/ \$50 NR

Sat/Sun \$35 R/\$60 NR

# Winter Storage @ Fairgrounds



Total Items Stored: **103**

45 Resident / 58 Non-Resident

Total: \$28,437

Secured Building: (Locked, indoor space)...\$12R/\$13NR/foot

Un-Secured Building: (Open air shelter w/roof,  
not locked)...\$7R/\$8NR/foot

Late Oct - Early April





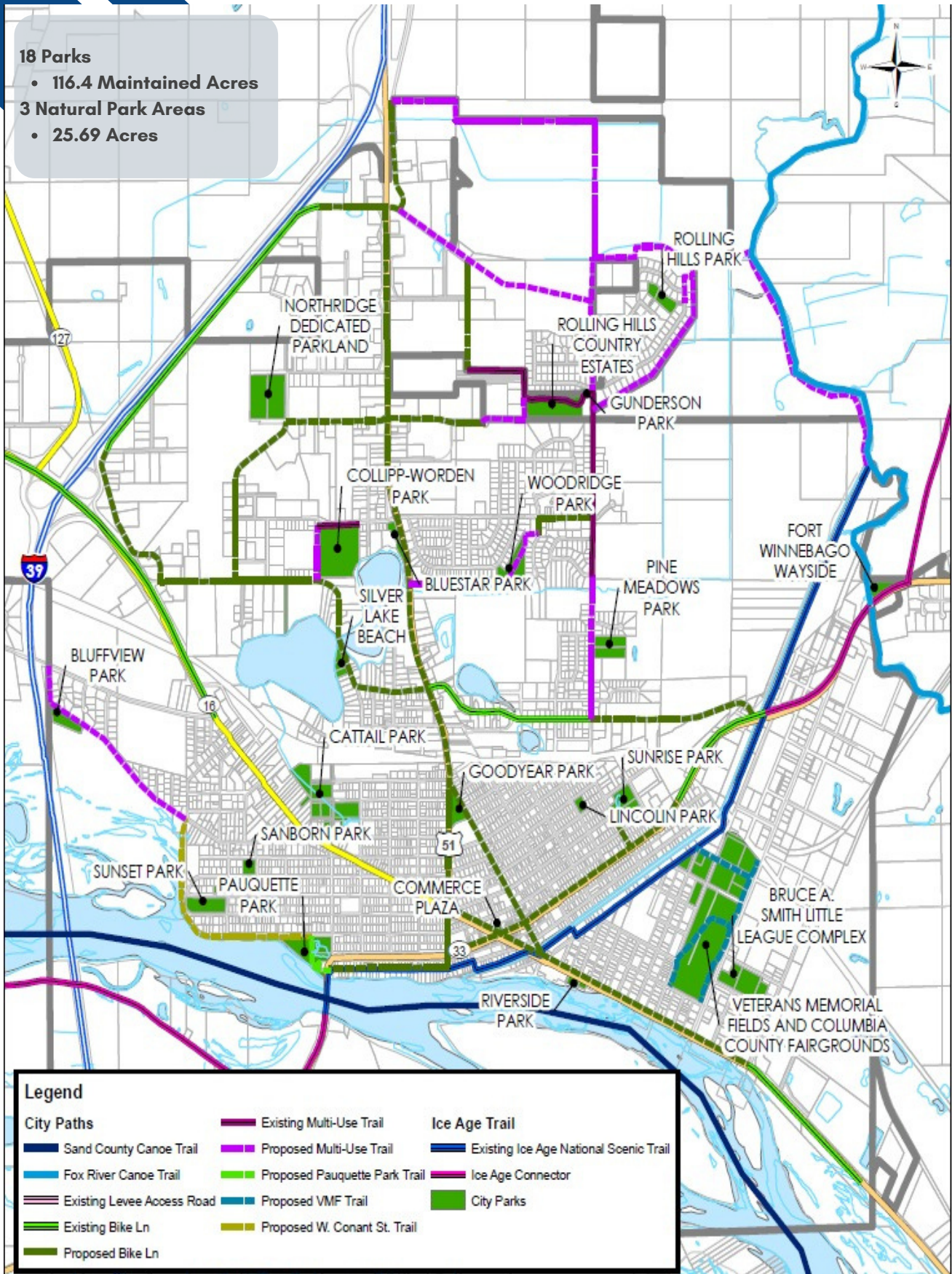
# Park Map

## 18 Parks

- 116.4 Maintained Acres

## 3 Natural Park Areas

- 25.69 Acres



### Legend

#### City Paths

- Sand County Canoe Trail
- Fox River Canoe Trail
- Existing Levee Access Road
- Existing Bike Ln
- Proposed Bike Ln

#### Existing Multi-Use Trail

- Proposed Multi-Use Trail
- Existing Pauquette Park Trail
- Proposed VMF Trail
- Proposed W. Conant St. Trail

#### Ice Age Trail

- Existing Ice Age National Scenic Trail
- Ice Age Connector
- City Parks

# Recreation

## Top 5 Most Popular Recreation Programs

Playground Program

Dance

Karate

Cheerleading

Youth Tennis

## New Programs

Curling Camp

Pickleball

Euchre Club

Walking Club



2,824

*Recreation Participants*

497

*Swim Lesson Participants*

22

*Programs Offered*

121

*Total # of classes*

# Recreation

Program	# of Classes	# of Participants
Winter Swim Lessons	17	105
Summer Swim Lessons	94	295
Fall Swim Lessons	15	72
Tot Basketball	3	37
Karate	18	286
PHS Curling Camp	1	19
PHS Tennis Camp	6	37
Safe Sitter Essentials	8	44
Dance Program	15	171
T-Ball	3	37
Soccer	5	96
Baseball Skills Camp	1	29
PHS Baseball Camp	2	40
PHS Girls Basketball Camp	2	46
Playground Program	9	786
Creative Crafts	4	28
Battledarts	2	66
Discover Drums	4	8
Flag Football - Spring	2	51
Flag Football - Fall	2	42
Summer Dance	10	117
Summer Cheerleading	6	235
Competitive Cheerleading	1	21
Tennis	17	110
PHS Cheer Camp	1	46



# Recreation

## Adult Softball

- 6 teams, 80+ players
- 10-week season (May-August), plus Playoffs

## Adult Volleyball

- 8 teams, 70+ players
- 14-week season (November-February) plus end of the season tournament

## Open Gyms

- Offered Sunday mornings (9am-Noon) and Monday evenings (7-9pm), November through February
- 377 users in 2023

## Pickleball

- Averaged 50+ players each week, May through September





+ +  
+ +  
+ +  
+ +



# Aquatics

## Swim Lessons

- 7 Sessions offered throughout the year
- 126 classes offered
- 497 swimmers

## Open Swim Stats

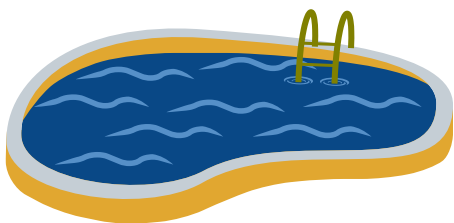
- 13 Open Swim Dates - 320 swimmers  
(\$3 per swimmer)

## Lifeguard Courses

- 1 classes, 5 total participants

## Beach Operations/Concessions

- Beach was staffed May -Aug
- Kayak/Paddleboard Rentals and  
Concession Revenue= \$4,473





# Special Events

- Pumpkins In The Park
- National Night Out
- Call From Santa
- Concerts In The Park
- Bucks Game
- Brewers Game



+ +  
+ +  
+ +  
+ +



# Forestry



- Tree City USA for 29th year.
  - Received Growth Award....
- In 2023 we planted 115 new trees. All trees were watered, mulched and maintained by park staff.
- Some of the more notable locations were
  - 25 trees along New Pinery Rd.
  - 49 trees at Veterans Memorial Field Sports Complex (Fully funded by grant from Alliant Energy)
  - 15 trees along W Burns St.
  - 8 trees at Goodyear Park
  - 4 trees at Collipp Worden Park (Fully funded by the Elks Club.)
- 50 tree removals are complete.
- Spongy moth, formerly known as Gypsy moth, has been spreading throughout south-central Wisconsin. We will keep a close eye in 2024 for infestation in Portage.

115

*Trees Planted*

50

*Trees Removed*

500

*Trees Pruned*





# Forestry

## • ARBOR DAY CELEBRATION

On April 26, 2023, Parks and Recreation staff worked with 6 volunteers from Renewal Unlimited to plant trees for our Arbor Day celebration. The planting event took place at Veteran Memorial Sports Complex and included the planting of 31 White Pine trees.

Volunteers helps dig holes, water, and mulch trees.



## GRANTS

ATC-Arbor Day Celebration: \$500

Alliant Energy - Trees Forever Grant: \$4,645

Elks Tree Donation: \$1,500



# Administration

## Staff Breakdown

- 5 Full Time Park & Rec Staff
- 1 50% Time Rec Office Staff
- 3 Summer/Seasonal Mowers
- 2 Summer/Seasonal Weed Harvesters
- 3 Summer/Seasonal Maintenance
- 55 Rec Program Staff
- 13 Lifeguards
- 1 Northwoods Staff



**489** Wisconsin Park & Recreation Association Discount Tickets Sold

# Sponsorship

As a sponsor of the Park and Recreation Department you have several opportunities for advertisement:

## YOUTH PROGRAMS

You choose which of our youth programs you would like to sponsor and your business logo will be included on the T-shirts for the participants to wear and keep. Sponsorship dollars will go towards program equipment and supplies. All Youth Sponsors will receive a t-shirt from the program they sponsor (optional).

## BALL FIELD BANNERS

These 9 x4 ft. banners hang along the outfield fences of the Veterans Memorial Field ball diamonds and will be seen by players and families participating in multiple programs from Adult Softball to Youth Sports and fairground events, April-October.

## SPONSOR COMBO

Be the ultimate sponsor! Combine a Youth Program Sponsor with a Ball Field Banner in one sponsorship, at a reduced rate. BONUS: Each year you return your sponsorship combo is discounted.





---

# 2023 Sponsors

1873 Grille

Allstate- Shelly Cibulka

American Family Insurance- Riley Kubatzke

American Family Insurance-Sheila Link

Arbor Green

Aspirus

Cascade Mountain

Collectors Choice Coins & Collectables

Community Bank of Portage (BWD)

Country Plumber

Craig's Popcorn Corner LLC

Crawford Oil

Culvers

Edward Jones- Josh Vehring

Edward Jones- Klay Vehring

Electric 1

Forever Yours Jewelry

Galley Studios

General Engineering

Gumz Farms

Hair Sensations

Hart & Olson Family Dentistry

Hillstad Heating

Johnson Chiropractic

Kiwanis Club of Portage

Knight Barry Title Services

Kruger Family Industries

MachineLab CrossFit

McReath Orthodontics

Midwest Dental

Pflanz, Mantey, Mendrala Funeral Home

Portage CrossFit Cooperative

Portage Furniture Store

Portage State Bank

Rhyme

Roth Professional Solutions

Saint Gobain

Schultz Small Engine

Sean Malone- State Farm Insurance

Seubert Family Dentistry

Smiley Law Office

Summit Credit Union

Terrytown Plumbing

TRICOR LLC- Don Rick Insurance

Two Rivers Signs

Walgreens

Walmart

WCCU (Westby Co-Op Credit Union)

Wieser Concrete

Wisconsin River Title Consultants

Zimmerman Plumbing



# Budget

## PARK & REC SUMMARY

	2023 Budget	2023 Actual
Revenues	103,606	123,838
Revenues Taxes	675,965	674,975
<b>Total Revenues</b>	<b>779,571</b>	<b>798,813</b>
<b>Expenditures</b>		
Administration	233,312	220,752
Recreation	101,011	111,544
Park Maintenance	445,248	466,517
<b>Total Expenditures</b>	<b>779,571</b>	<b>798,813</b>

## POOL SUMMARY

	2023 Budget	2023 Actual
<b>Revenues</b>		
Recreation Program Fees	18,760	18,778
Donation Cont. From School	10,000	9,382
Transfer from General	20,000	20,000
<b>Total Revenues</b>	<b>48,760</b>	<b>48,160</b>
<b>Expenditures</b>		
P&R Pool ADMIN	12,461	10,582
Recreation Pool Programs	27,050	26,960
<b>Total Expenditures</b>	<b>39,512</b>	<b>37,543</b>

# Contact Us



608-742-2178



[facebook.com/portageparknrec](https://facebook.com/portageparknrec)



[portage.recdesk.com](https://portage.recdesk.com)



701 W Slifer St. Portage, WI 53901

# Thank You

Thank you to the Portage community for your continued support. We look forward to improving the quality of the parks and recreation opportunities in 2024!